

# NeedleGuide Assistant for convenience and safety

Tailor made to fit your choice of syringe

LED light to prevent over-pressing

Inspecting Window to avoid hitting the vessels

Needle cover

Syringe Gripping Jaws

Activation Button

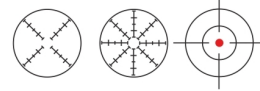
Over-pressing Button

Plunger

Safety Slider

## Injection Innovation

Patent, Trademark and Design Protected

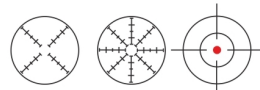


## INJECTABLE

Easy To Use

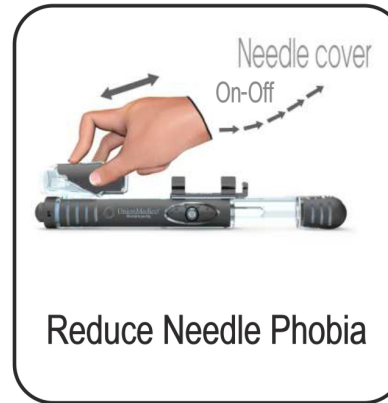
- Greater drug efficiency Less side effects
- Placing Needle in tissue
- Ensures stability at needle penetration
- Right injection angle
- Correct penetration speed
- Less injection pain
- No more anxiety and needle phobia
- Needle shield eliminates needle exposure
- Aspiration check/avoid direct deposit in vessel
- LED light to prevent over-pressing
- Safety lock and Childproof
- Ability to self-inject
- Easy – To – Use

## Self-Injection or Relative Devices



### Before use

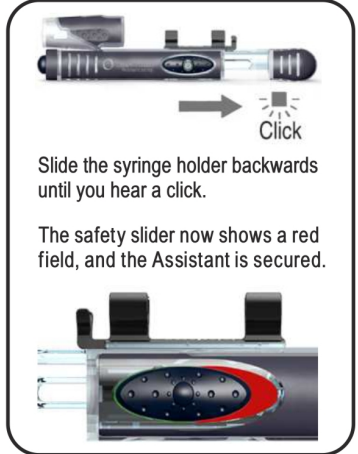
- ▶ Seek advice from your medical advisor for suitable needle length and where to deposit your drug.
- ▶ Be aware to use a correct needle length that is suitable for the thickness of your tissue in order to reach the Subcutaneous or Intramuscular tissue.
- ▶ We recommend that you inject into your upper thigh.
- ▶ If your weight changes! Your BMI goes up or down Re-check your needle size and seek advice from your medical advisor.



### 1 Starting

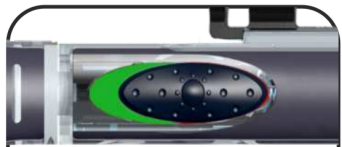
- ▶ Please carefully read all of these steps 1-11, along with the instructions provided to you with your medical drug.
- ▶ Prepare your syringe and needle according to your drug instructions.
- ▶ Run some tests before injecting! Load / Unlock / Release

### 2 Loading



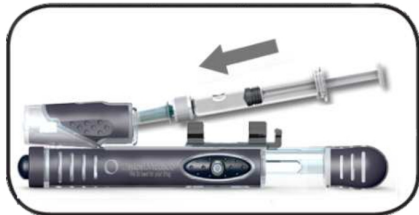
Millions of injections worldwide is carried out by this injection platform

By  **UnionMedico**<sup>®</sup>  
Improving Injection Safety



To unlock the Assistant  
Slide the safety slider  
Forward to green exposure

Do not touch the Activation Button  
when you have unlocked the safety slider



- ▶ Slide the syringe into the Assistant's gripping jaws. ( Do not bump needle tip )

If the needle tip touches anything,  
replace the needle

The syringe holder is custom made to fit your choice of syringe.  
**Do not use any other type of syringe than the one you have chosen. ( To avoid wrong impact )**



Make sure to put the syringe  
between the gripping jaws.



Use only syringes and needles that are identical to the ones you received from Union Medico.

### 3 Preparing your skin



- ▶ Clean your skin with an alcohol swab where you intent to make the injection.

### 4 Placing the Assistant on the skin



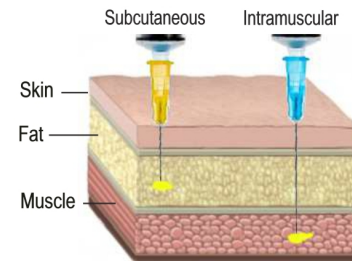
- ▶ Rest the Assistant gently at the injection site at an 90° angle. The LED light will turn on. **Do not inject yet.**
- ▶ Hold the base of the Assistant with your non-injection hand to make it steady. The syringe should be on the opposite side of your hand.

**DO NOT OVERPRESS THE ASSISTANT LIKE THIS.**



- ▶ JUST press the Assistant until the LED light turns ON and OFF (Blinking). Then hold a slight pressure just enough to keep the LED light turned on.
- ▶ Be aware to use a correct needle length that is suitable for the thickness of your tissue.

Controlled delivery

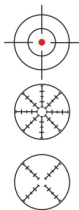


### 5 Activating



- ▶ Use your index finger and thumb of your injection hand. Push down the safety lock until it stops. The red indication will change to green. Hold the lock in this position with agente pressure.
- ▶ **You have now activated your Assistant.**

100% Depot control  
Controlled delivery



## 6 Releasing the Assistant



- ▶ Place your index finger (of your injection hand) on the activation button.
- ▶ Relax the muscle that you are injecting into.
- ▶ When you are ready, press the button to release the syringe holder and let it slide toward your skin.
- ▶ **Do not hold the syringe holder.** Your hands must be placed as shown in the picture to make sure that the Assistant works properly. Do not place your hand, so it can obstruct the motion of the syringe holder.

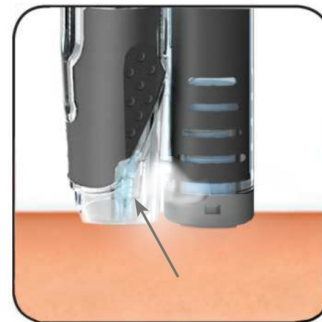
## 7 Aspiration Depot control

- ▶ Hold the Assistant straight, and pull back the syringe plunger carefully for about 5 seconds.  
**NON - painful Process**  
If you do not see any blood continue to inject slowly.
- ▶ Some drugs should **NOT** be injected directly into the vein/vessel.
- ▶ The Assistant will be able to give you the full control over your deposit.
- ▶ By making a correct drug deposit, you will gain the full power of your medication, and you will reduce the risk of any side effects.



- ▶ If you hit a vein/vessel you will see blood in the needle hub, stop pulling back, reject and change the needle, move the injection spot to the side, about 1 cm and restart.

## 8 Giving yourself the dose

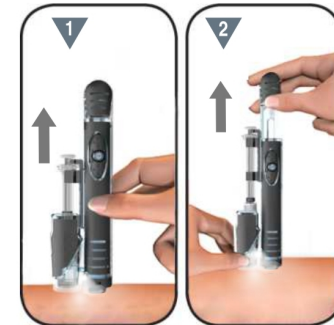


- ▶ Inspection window to avoid hitting a blood vessel/vein.



- ▶ Still holding the base of the Assistant, slowly press down the syringe plunger until the syringe is empty. 10 second pr. 1ml.
- ▶ You can use either your index finger or your thumb to push down the plunger.

## 9 Removing



- ▶ Based on your personal preference, there are two possibilities to remove the needle from the injection site.
- ▶ 1. Pull the whole Assistant straight out. This removes the needle from your skin. Slide the syringe holder upwards until you hear a click.
- ▶ **Caution:** Be careful not to injure yourself or others with the exposed needle.
- ▶ **OR**
- ▶ 2. Still holding the base of the Assistant, slide the syringe holder upwards until you hear a click. This removes the needle from your skin.

Caution: Do not let go of the syringe holder before you hear a click, otherwise the needle may go back in.

## 10 Disposing of the syringe



- ▶ The Assistant is reusable.
- ▶ Remove the syringe from the Assistant  
Caution: Do not recap the needle.
- ▶ Disposit the needle and syringe according to your medical instructions.

## 11 Storing and cleaning



- ▶ Push down the safety lock. Press the button to release the syringe holder.
- ▶ To clean the Assistant wipe it with a soft cloth moistened in a mild soap solution.
- ▶ Replace the Assistant in its case until your next injection.

## Specifications

NeedleGuide Assistant  
Reusable  
Intramuscular Subcutaneous  
Dimensions 145 mm x 38 mm  
Syringes range 0,5mL – 6mL  
Needle 30G and lager  
Needle range 4 – 40mm

### Easy to Use

- It improves precision and safety while administering intramuscular or subcutaneous injections.
- It reduces the fear that most people have of injections.
- Anyone can use it, including people with a minimum degree of functionality.
- It allows gradual injection of medicine, thereby preventing blue marks on the skin.
- Minimizes the pain when injecting.

## Quality and Compliance

- ▶ High functional Injection system  
ISO 9999 classification 04.19.12
- ▶ Tested according relevant parts of EN 12182
- ▶ Tested at an accredited test institute. A constant impact velocity and a life time of 2 years were documented.
- ▶ CE-marked.
- ▶ ISO 13485 certified and audited according to GMP.

## Quality of care for Quality of life

261792A05

2019/10PH120001

Union Medico  
Cobis Copenhagen Bio Science Park  
Ole Maaløes Vej 3  
DK-2200 Copenhagen  
[www.unionmedico.com](http://www.unionmedico.com)

Your **NeedleGuide** Assistant  


Intramuscular • Subcutaneous